

2024年度東京藝術大学音楽学部

入学試験問題

出題意図等

基礎能力検査（楽典）

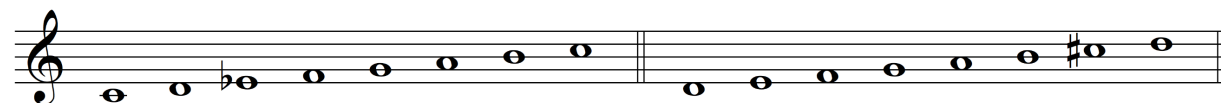
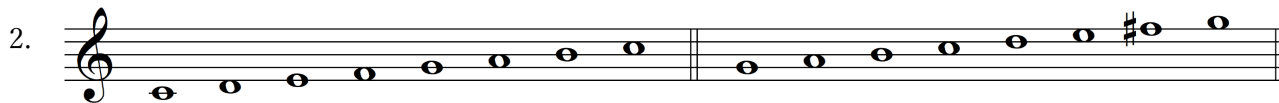
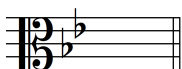
- ・「出題意図等」とは、出題意図あるいは標準的な解答例のことです。
- ・「出題意図等」についての問い合わせには対応いたしません。

## 基礎能力検査 楽典【出題意図】

本学における高水準の専門教育に欠くべからざる基礎能力が備わっているかどうかを試すものであり、記譜と実際に鳴り響く音楽とを的確に関連付ける能力や、音楽の全般的な基礎理論の知識に関する問題を課すものとする。

【楽典 模範解答】

I. 1.



3. (あ) イ長調 \_\_\_\_\_ (い) ニ長調 \_\_\_\_\_

4. \_\_\_\_\_ As \_\_\_\_\_ (大文字 小文字不問)

1 オクターブと完全5度

II. 1. (1) 減7度 \_\_\_\_\_ (2) 短7度 \_\_\_\_\_ (3) (完全12度) \_\_\_\_\_

④ 短3度 \_\_\_\_\_ ⑤ 増4度 \_\_\_\_\_ ⑥ 減5度 \_\_\_\_\_

2. (a) 掛留音 \_\_\_\_\_ (b) 倚音 \_\_\_\_\_ (c) 刺繍音 \_\_\_\_\_ (d) 逸音 \_\_\_\_\_

3. (ア) 属7 (の) 和音 \_\_\_\_\_ (イ) 減3和音 \_\_\_\_\_ (ウ) 短3和音 \_\_\_\_\_

(エ) 短7 (の) 和音 \_\_\_\_\_ (オ) 減7 (の) 和音 \_\_\_\_\_

4. \_\_\_\_\_ f moll \_\_\_\_\_ → \_\_\_\_\_ b moll \_\_\_\_\_ → \_\_\_\_\_ es moll \_\_\_\_\_ (大文字 小文字不問)

5. [A] 半終止 \_\_\_\_\_ [B] 偽終止 \_\_\_\_\_ [C] 完全終止 (全終止) \_\_\_\_\_

6.

Musical score for exercise 6, measures 7-8. The score is in G major (one sharp) and 4/4 time. It consists of four staves: two treble clefs and two bass clefs. The first staff has a treble clef and a key signature of one sharp. The second staff has a treble clef and a key signature of one sharp. The third staff has a bass clef and a key signature of one sharp. The fourth staff has a bass clef and a key signature of one sharp. The music features various rhythmic patterns and dynamics, including accents and slurs.

7. *con moto* 動きをもって *Sul G* G線上で

8. 弦楽四重奏

9.

Musical score for exercise 9, measures 30-33. The score is in B-flat major (two flats) and 4/4 time. It consists of four staves: two treble clefs and two bass clefs. The first staff has a treble clef and a key signature of two flats. The second staff has a treble clef and a key signature of two flats. The third staff has a bass clef and a key signature of two flats. The fourth staff has a bass clef and a key signature of two flats. The music features various rhythmic patterns and dynamics, including accents and slurs. A dashed box highlights measures 31-33.

10. a As b C (大文字 小文字不問)

III. 1. エ

2. ④ con sordina (con sordino)                      ⑥ poco ritardando

3. ② チ                      ③ ツ                      ⑤ タ                      ⑦ サ

4. ネ

5. 6

IV. 1. ♩. = 64

2.



V. 1. ○    2. ○    3. ×    4. ○    5. ×    6. ○    7. ×    8. ×